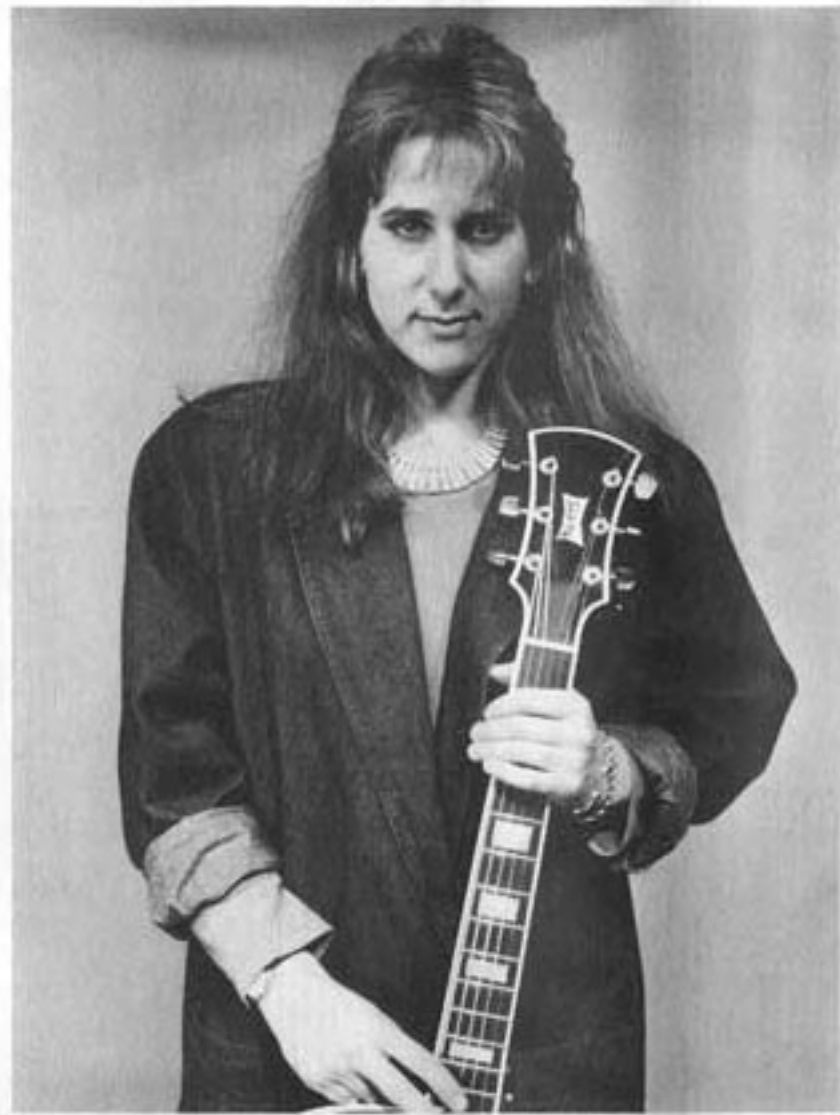
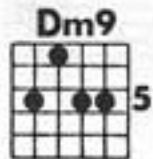

***Advanced Jazz and
Latin Improvisation
With Emily Remler***



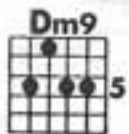
HOT TIPS



4/4

Dm9 **Dm9** **E^b9** **Dm9** **E^b9**

Dm9 **G7(13)** **Dm9** **G7(13)** **Cmaj9** **Dm9** **G7(13)** **Cmaj9**




G7(13) G7(13)

This system shows a musical phrase in G7(13) on a treble clef staff. The melody consists of eighth and quarter notes, including a sharp sign on the second measure. Below it is a guitar TAB with fret numbers: 5 2 3 5, 2 4 2 3, 2 4 2 5, 3 2 5.

F7(13)

This system shows a musical phrase in F7(13) on a treble clef staff. The melody includes a flat sign on the second measure. Below it is a guitar TAB with fret numbers: 3 6 5 4, 3 4 5 4, 3 7 3 4, 5 6.

G7(13)

This system shows a musical phrase in G7(13) on a treble clef staff. It features triplet markings over the second and third measures. Below it is a guitar TAB with fret numbers: 5 8 7 6, 5 6 7 6 5, 9 5 6 7 8 6 5 7, 6 5 7.

This system shows a musical phrase in G7(13) on a treble clef staff. Below it is a guitar TAB with fret numbers: 5 3 7 6, 7 5 5 4 7 4 5 5, 7 6 7 3 5.

This system shows a musical phrase in G7(13) on a treble clef staff. Below it is a guitar TAB with fret numbers: 5 3 7 6, 7 5 5 4 7 4 5 5, 7 4 5 5, 7 4 5 5 7.

This system shows a musical phrase in F7(13) on a treble clef staff, consisting of a sequence of notes with flats. Below it is a guitar TAB with fret numbers: 4 6 2 4 6 3 5 6 3 4 6 4 6 3 4 6.

G7(13)

5

G9

G9

G7(13)

B^b7(13)

E^b9

B^b7(13)

Dm9 **G7^b13** **Cmaj7**

Dm9 **G7[13]** **Cmaj7** **A7^b13**

6 8 4 6 8 5 7 8 5 6 6 5 8 5 6

Dm9

5 3 2 5 5 5 2 3 5

G7^b13

4 6 2 4 6 3 5 6 3 4 4 3 6 4 3

Cmaj7

3 5 3 5 4 2 5 2 5 3 2 5

A7^b13

6 8 4 6 8 5 7 8 5 6 6 5 8 5 6

Music Transcribed by Fred Paterno

Cm7 **C#7b5**

Cm7 **F9** **Fm9** **Dm7b5** **G7b13** **Db9**

Cm9 **Ebm9** **Ab7[13]** **Ab7b13** **Dbmaj9**

Dbmaj9 **Dm7b5** **G7b13** **Db9** **Cm9** **Db9**

Cm9

7sus	7#5	7b5	7b9	7#9	7#9	7b9
9	9#5	9b5	9#11	11	7(13)	7b13
13b9	13#9	13b5	7b9	7#11	#11	#11
#11	#11			#11	#11	#11
7b9	7#9				#11	#11